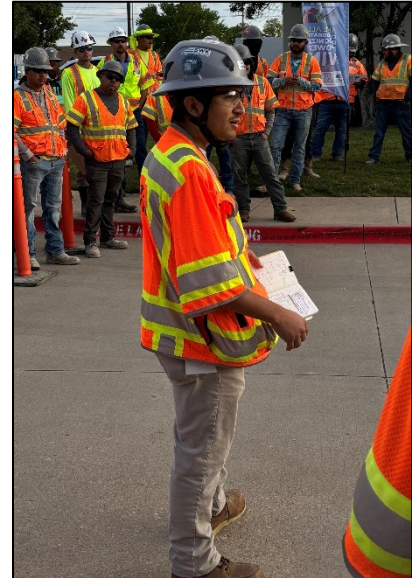


CREW360 ALL STAR – PABLO GONZALEZ GUILLEN

The CREW360 Safety Steering Team recognizes Pablo Gonzalez Guillen as a CREW360 All Star. Pablo began his career with Stacy Witbeck in 2021 as a Field Engineer. His first assignment was the R200 Downtown Redmond Link Extension in Redmond, WA, and he now serves as the Project Engineer on the Shiloh EMF project in Dallas, TX.

In construction, safety and leadership go hand in hand—and Pablo exemplifies this connection. Pablo’s role as a field and project engineer is inseparable from his commitment to safety. He doesn’t just follow safety protocols; he shapes the culture so that every team member feels responsible for safe practices. Whether working with owners, SW employees, or subcontractors, Pablo’s calm and humble approach earns trust and encourages open communication about safety concerns.



When challenges arise—whether tight deadlines, cost pressures, or disagreements over work processes, Pablo always puts safety first. In particular, when subcontractors, such as the elevator and AC teams, repeatedly failed to comply with safety requirements, Pablo addressed the issues immediately and directly. He communicated expectations clearly, held firm on corrective actions, and ensured no shortcuts were taken, even if it meant delaying the schedule. Pablo never hesitates to help out, whether it be with safety orientations or translation for a primary Spanish speaker. His consistent, professional approach helps protect everyone on site and sends a strong message that safety is non-negotiable.

Leading by example, coaching others, and holding the team to high standards, Pablo makes safety a natural part of daily operations. His leadership motivates teams not just to comply, but to embrace safety as the foundation of successful projects. Just another day in Dallas, Texas!



Below are comments from his coworkers, along with additional information about Pablo and why he is so deserving of the CREW360 All Star recognition.

What others say about Pablo Gonzalez:

- *“Sometimes safety requires critical thinking, and Pablo is one person you can rely on to think critically towards a solution.” – Billy Johns, SW Safety Manager*
- *“The 1st time I met Pablo, we played golf together. The excitement he had talking about working for Stacy Witbeck, and the way he talked about the safety and quality culture of Stacy Witbeck let me know that we partnered with the right group. I told my team we found a company*

that will make for a great partnership and working relationship.”

– SW Electrical Subcontractor Superintendent

- *“Pablo is a bright individual who will end up going far in his career and is very well spoken. He gets his point across very easily in both English and Spanish so everyone can understand.” – Tim Stalcup, SW Laborer*
- *“Pablo is very well rounded in what he knows and is very smart on a lot of topics. He has a good disposition, he never over or under reacts, which makes for a great Project Engineer. He is also very helpful in figuring out solutions to problems that may come up.” – Mike Cunningham, SW Track Superintendent*

Information about Pablo and what he thinks about Safety:

Why do you work safely?

- I work safely because everyone deserves to go home the same way they came to work. In construction, the decisions we make every day directly impact not only ourselves, but our crews and their families. It’s everyone’s responsibility to be safety leaders to lead by example.

What does Safety mean to you?

- Creating an environment where risks are identified and addressed early. It’s about your preparation/planning of your work and respect toward others. Not just procedures, but a mindset that we should all have.

What has been your most memorable moment at work?

- Carne asadas in Texas. They guy on the grill was a subcontractor’s operator with big ol’ shades and bumping Mexican music all day.

What role was your favorite?

- Field Engineer

What is something you learned that you still teach others?

- Non-complacency due to an incident on my previous job.

How do you promote safety?

- I promote safety by trying to lead by example, addressing hazards immediately, and encouraging open communication without fear of blame. I believe in proactive JHAs, consistent communication, and empowering team members to speak up. Most importantly, I like to listen to the craft, because strong safety cultures are built on trust and accountability.



Where did you grow up?

- I grew up in a small town in Michoacan, Mexico. When I turned 8, we moved to Yakima, WA.

What do you do for fun?

- I enjoy spending time outdoors, specifically camping, traveling and trying out new restaurants.