

CREW360 ALL STAR – BILLY ASTLEFORD

The CREW360 Safety Steering Team recognizes Billy Astleford as a CREW360 All Star. Billy first began working for Stacy Witbeck in 2015 as an Operator on the Mid-Coast Light Rail Extension in San Diego. After a few years, he was promoted to a Foreperson and is currently working on our Port of Long Beach projects.

What others say about Billy:

- *“Billy has been a great resource in being able to identify potential hazards and best practices while performing work. Personally, he took the time to show me the proper way to spot and signal for someone while they unload and load material so I would be properly trained. He goes the extra mile to ensure everyone can get back home safely.” – Xavier Martinez, SW Field Engineer.*
- *“Having the pleasure of working with him, I can say honestly say that he is one of the better individuals I have worked with. In performing his role, he is very attentive to the needs and opinions of his fellow workers. Billy coordinates well, specifies each task with the intent of having and knowing that you understand what is needed to get the job done. High morale is important to Billy with his crew. You have the feeling of knowing that your opinions*



and thoughts are valid, not just left feeling ignored. He reaches out to lend a helping hand when necessary and has proven himself to be a great leader.” – Phan Prum, SW Foreperson.

- *“Billy is very knowledgeable about what needs to get done and how to make it happen as quickly as possible while keeping safety and protocol at the top of his list. He is very safety oriented and covers all his bases. He genuinely cares about the safety of his crew. Making sure everyone understands or if they have any questions or concerns. Including unseen or possible hazards that most might not recognize.” – Raymond Carter, SW Operator.*



Why do you work safely?

I work safely because my family expects me home, and my crew depends on me to lead by example. There are no shortcuts, doing it right is the job.

What does safety mean to you?

Safety means creating a culture where everyone looks out for each other and keeps an environment where the job can be done without anyone getting hurt.

How do you promote safety?

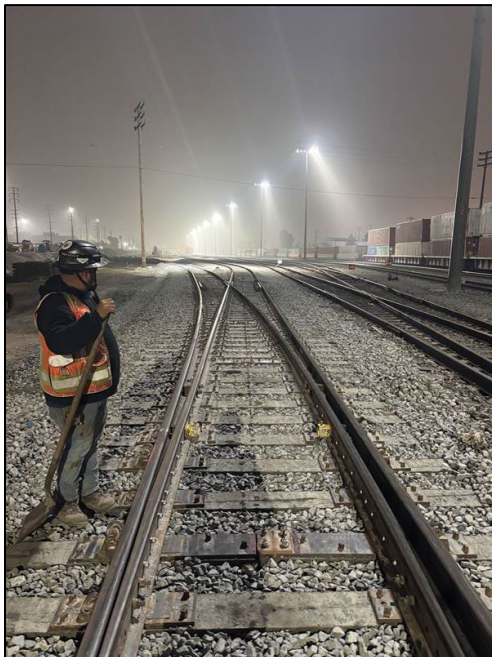
I promote safety by leading from the front, holding the standard, coaching my crew, and correcting issues immediately. If it's not safe, we stop and fix it.

What is something you learned that you still teach others?

One of the biggest things I've learned is that safe operation comes from discipline and awareness. I make it a point to train apprentices the right way; proper machine control, jobsite awareness, and no shortcuts, so they build good habits from day one.

What has been your most memorable moment at work?

What stands out most is seeing a project go from start to finish and knowing it was built safely and correctly. There's a lot of pride in being part of something that people will use long after we're gone.



What SW project was your favorite?

My favorite project was MCTC. It was the largest project I've worked on, and being part of it from early stages to completion over six years, seeing it all come together safely and successfully was a great experience.

What SW role was your favorite?

Being a foreman has been my favorite role because it's about more than just the work, it's about people. I enjoy coordinating with different trades, understanding how everyone works, and helping my crew develop while keeping the job moving safely and efficiently.

Where did you grow up?

San Marcos in Southern California.

What do you do for fun?

Family time, desert trips, and the river.